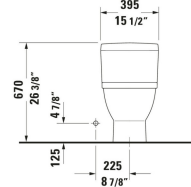
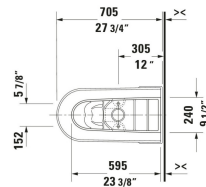
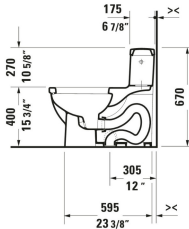
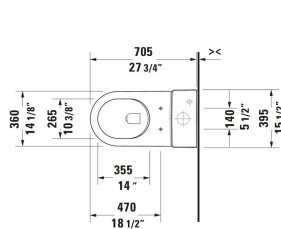


Starck 3 One Piece Toilet # 212001..01 / 212001..U4 / 212001..01 / 212001..U4

| < 15 1/2 " > |



One Piece Toilet	Dimension	Weight	Order number
27 3/4 ", Elongated, Single Flush, Flush water quantity: 1.28 gpf, Siphonic, Flushing rim: Closed, Outlet: vertical, Rough-in: 12 ", cUPC listed: Yes			
Colors			
00 White High Gloss AA White High Gloss, Coating			
Variant			
White High Gloss, Trip lever placement: Left, WaterSense: Yes	15 1/2 "x27 3/4 "	114.861 lb	212001..01
White High Gloss, Flush water quantity: 1.28/1.28 gpf, Trip lever placement: Right	15 1/2 "x27 3/4 "	114.861 lb	212001..U4
White High Gloss	15 1/2 "x27 3/4 "	114.861 lb	212001..01
White High Gloss	15 1/2 "x27 3/4 "	lb	212001..U4
Accessory			
Installation Set	2 3/8 x 5 1/8 "	1.874 lb	001417
Suitable products			
Toilet Seat Open front, Elongated, 14 3/8 x 19 1/8 "	14 3/8 x 19 1/8 "		006431
Toilet Seat Slow close, Open front, Elongated, 14 3/8 x 19 1/8 "	14 3/8 x 19 1/8 "		006439
Toilet Seat Slow close: No, Hinge material: Stainless Steel, Elongated, 14 5/8 x 19 5/8 "	14 5/8 x 19 5/8 "		006332
Toilet Seat Slow close: Yes, Removable Seat, Hinge material: Stainless Steel, Elongated, 14 5/8 x 19 1/4 "	14 5/8 x 19 1/4 "		006339
One Piece Toilet Set items: One Piece Toilet, Toilet Seat, Article No.: 2120010001, 0063390000, White High Gloss, Siphonic, Flushing rim: Closed, Single Flush, Trip lever placement: Left, Flush water quantity: 1.28 gpf, Single Flush, Trip lever placement: Left, 15 1/2 x 27 3/4 "	15 1/2 x 27 3/4 "		D19098

All drawings contain the necessary measurements which are subject to standard tolerances. They are stated in inch & mm and are non-binding. Exact measurements, in particular for customized installation scenarios, can only be taken from the finished ceramic piece.